



# GMT MONTHLY MEMBERSHIP PROGRESS REPORT

Results as of: 5/31/2020

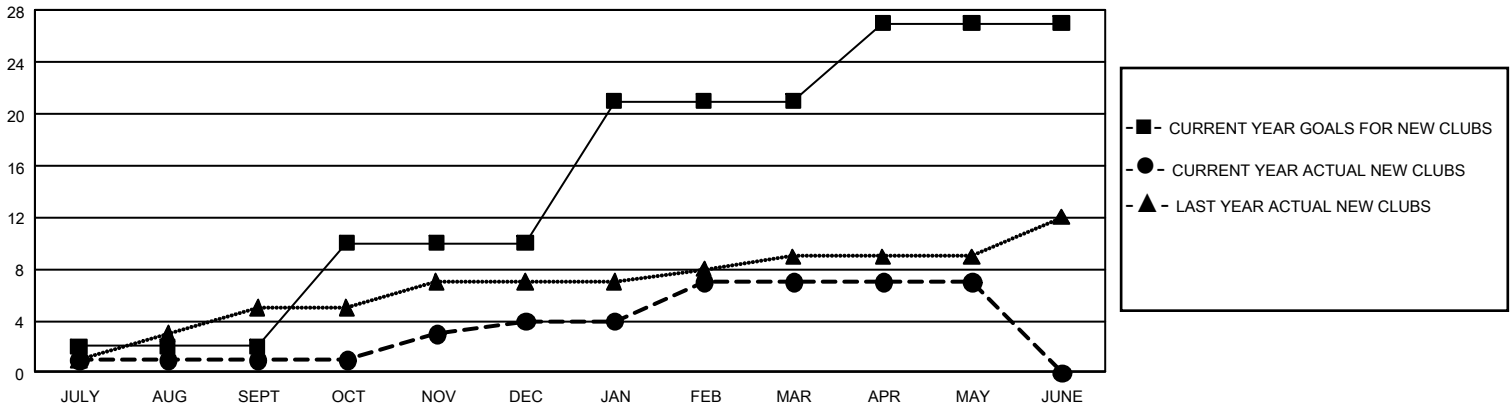
## GAT Constitutional Area 2

REPORT DOES NOT INCLUDE CLUBS IN UNDISTRICTED AREAS.

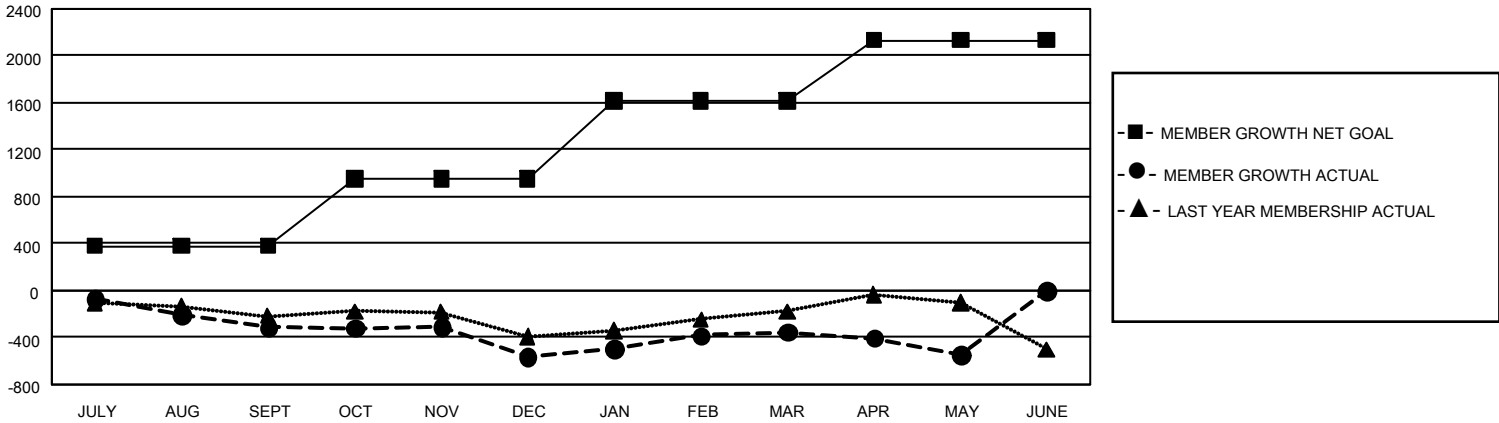
Clubs			
RESULTS FOR 2019-2020			
QUARTER	NEW CLUB GOAL	NEW CLUBS	DROPPED CLUBS
JULY/AUG/SEPT	6	1	5
OCT/NOV/DEC	24	3	12
JAN/FEB/MAR	33	3	1
APR/MAY/JUNE	18	0	1

Members			
RESULTS FOR 2019-2020			
QUARTER	MEMBER GROWTH NET GOAL	MEMBER GROWTH ACTUAL	DROPPED MEMBERS ACTUAL (including transfers)
JULY/AUG/SEPT	1,134	425	661
OCT/NOV/DEC	1,719	700	890
JAN/FEB/MAR	2,004	779	482
APR/MAY/JUNE	1,545	272	408

**GOALS AND ACTUAL NEW CLUBS CUMULATIVE**



**GOALS AND ACTUAL MEMBERS CUMULATIVE**



<b>DROPPED CLUBS: 19</b>	<b>590 CLUBS OF 1,060 ADDED 1 OR MORE NEW MEMBERS</b>	<b>GENDER DISTRIBUTION</b> MALE            16,794 (66.08%) FEMALE         8,621 (33.92%)
<b>DROPPED MEMBERS</b> DECEASED            326 CLUB CANCELLED      118 OTHER                 1,997 <b>TOTAL                    2,441</b>	<a href="#">CLICK HERE FOR CUMULATIVE MEMBERSHIP DATA</a>	TOTAL FAMILY UNIT MEMBERS            4,661 FAMILY MEMBERS PAYING HALF DUES            2,383